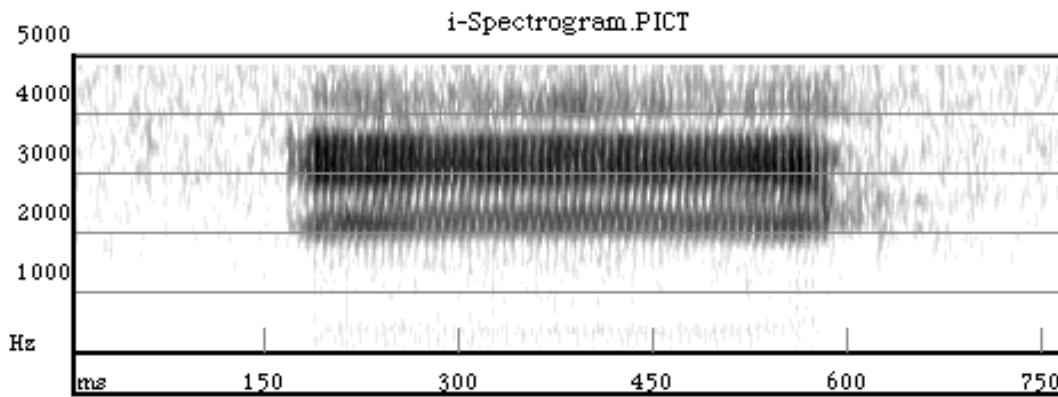
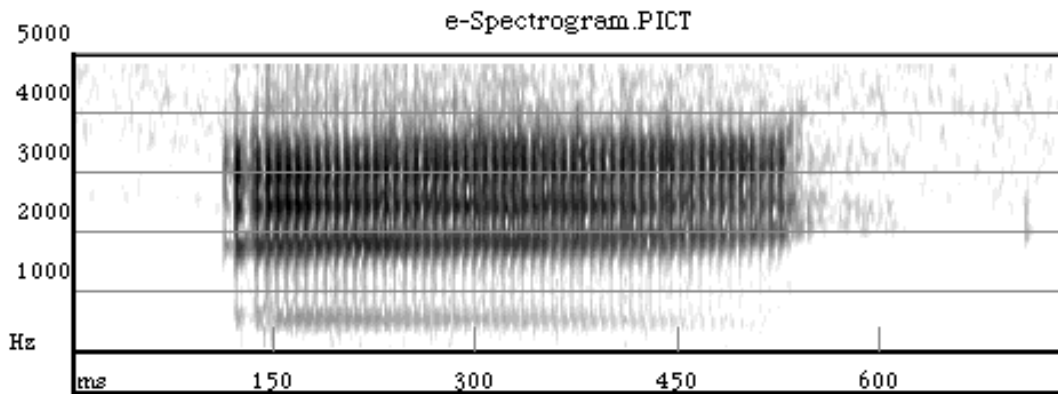


Acoustic distinctions in vowels

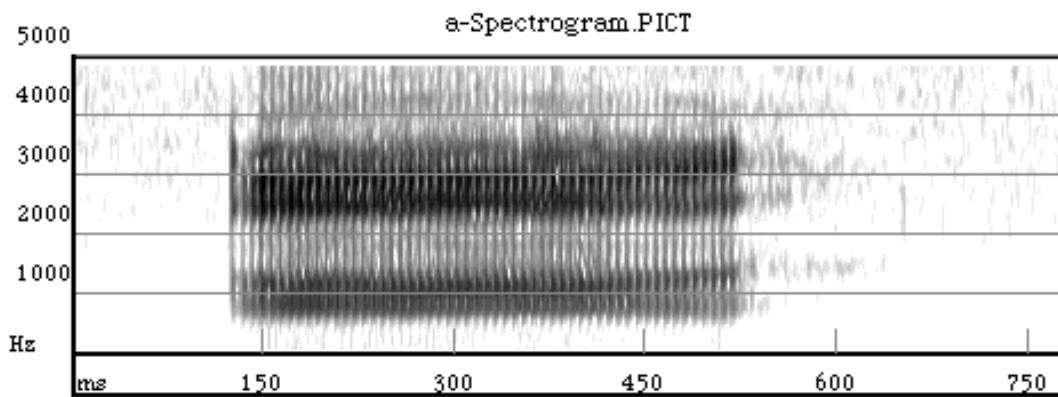
[i] = 'bee' = pronounced with low first formant and high second formant



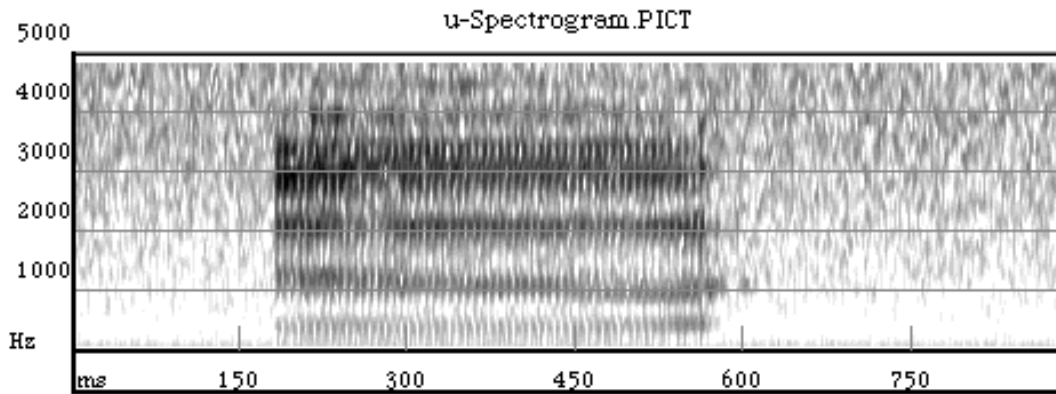
[e] = 'bay' = pronounced with mid-low first formant and mid-high second formant



[a] = 'bah' = pronounced with high first formant and low second formant



[u] = 'boo' = pronounced with low first formant and low second formant



[o] = 'Bo' = pronounced with mid-low first formant and mid-low second formant

