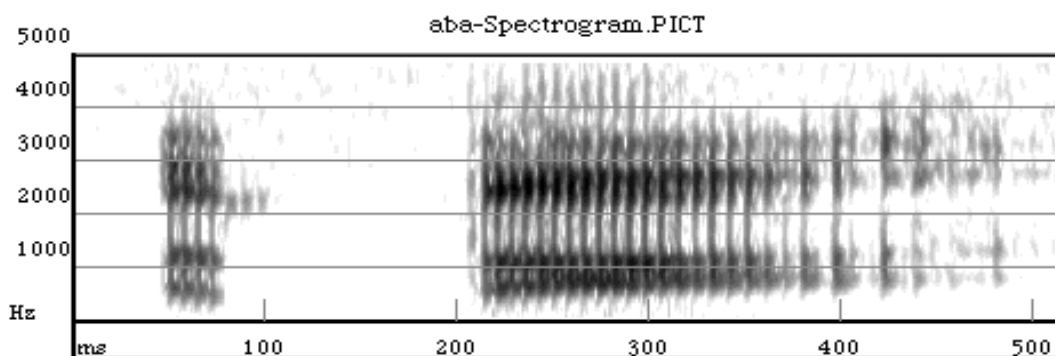
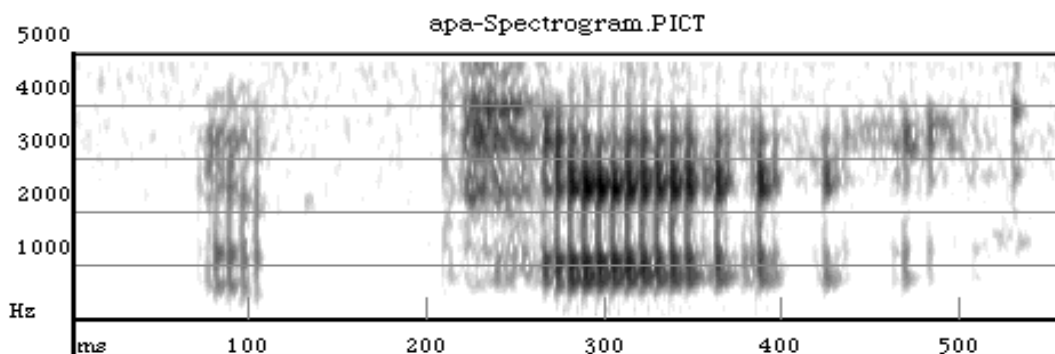


Acoustic Phonetics
Differences in voicing and VOT—“Voice Onset Time”

[b] = voiced unaspirated. VOT is 0 to 20 milliseconds after stop release.



[p] = voiceless aspirated. VOT is generally between 60 and 100 milliseconds.



after [s], [p] is voiceless unaspirated. VOT is from 0 to 20 milliseconds.

