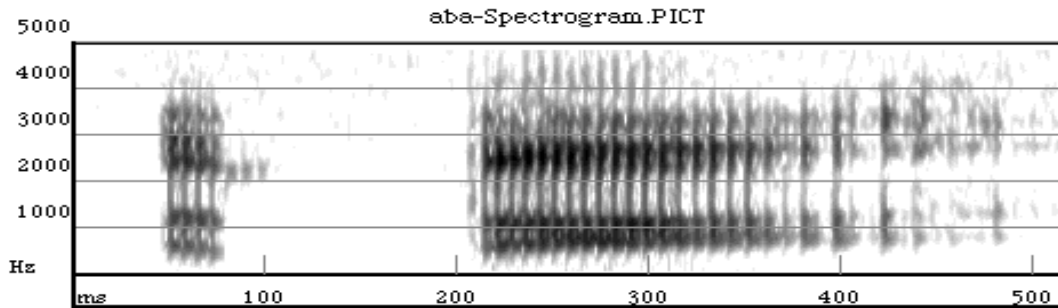
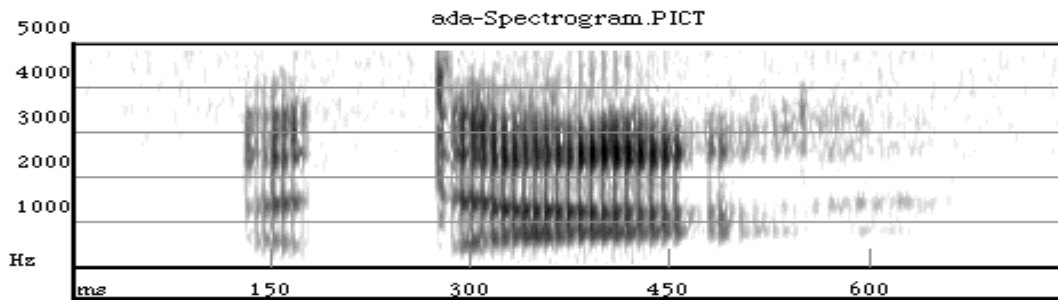


Place of Articulation distinctions in stops

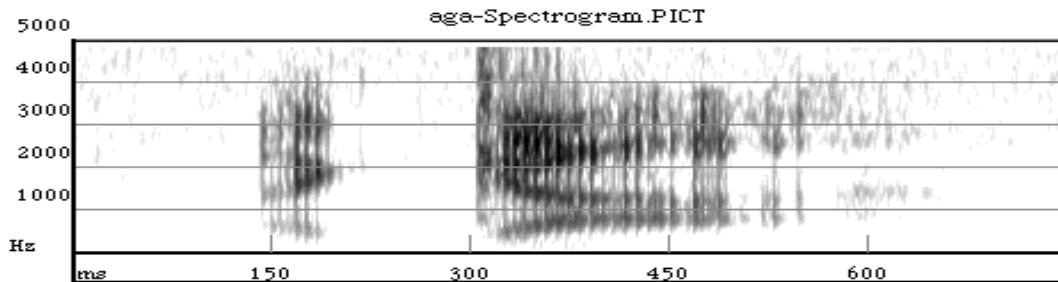
[b] = bilabial—pronounced with both lips.



[d] = alveolar—pronounced with the tip of the tongue behind the upper teeth.

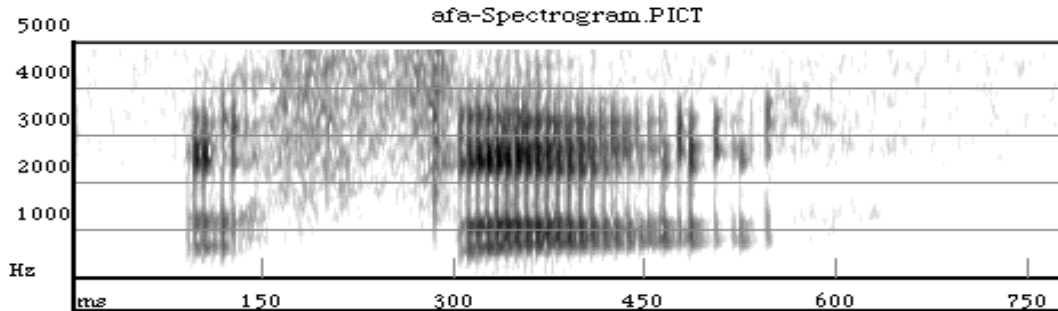


[g] = velar—pronounced with the back of the tongue against the roof of the mouth.

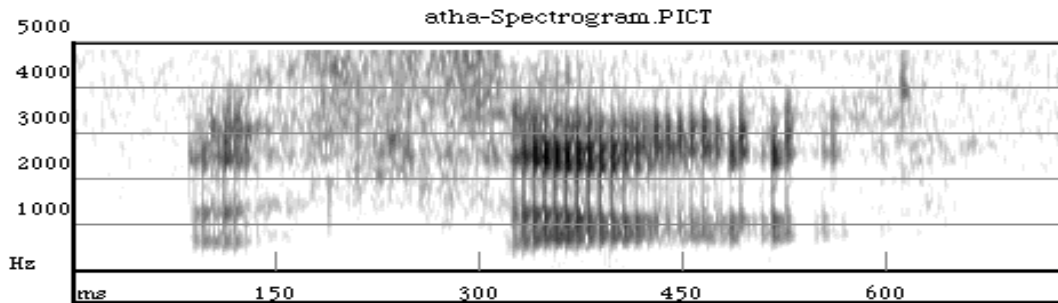


Place of Articulation distinctions in fricatives

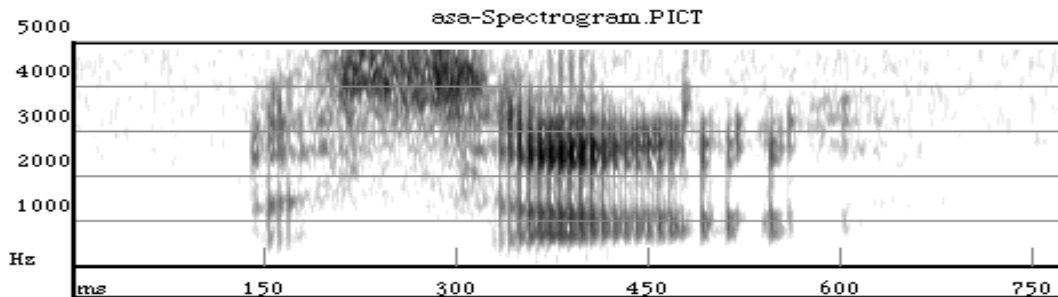
[f] = labio-dental—pronounced with upper teeth and lower lip



‘th’ = [θ] = interdental—pronounced with the tongue between the teeth



[s] = alveolar—pronounced with the tongue behind the upper teeth



‘sh’ = [ʃ] = post-alveolar—pronounced with the tongue against the front palate

