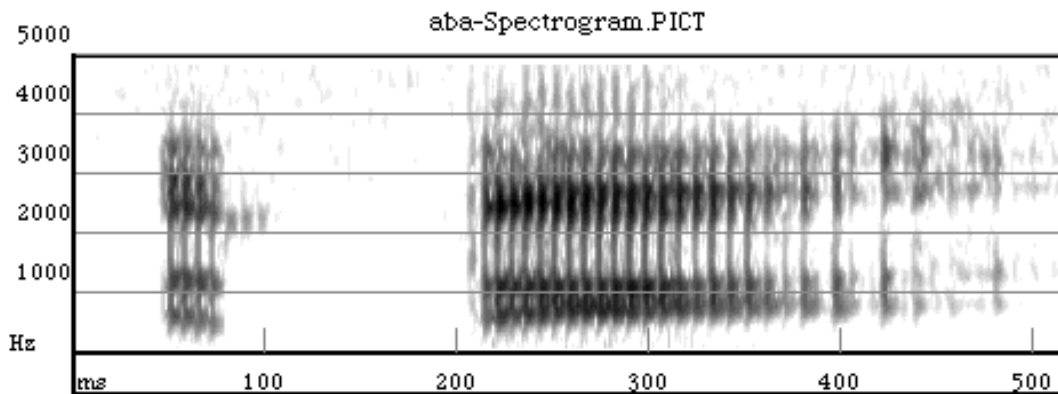
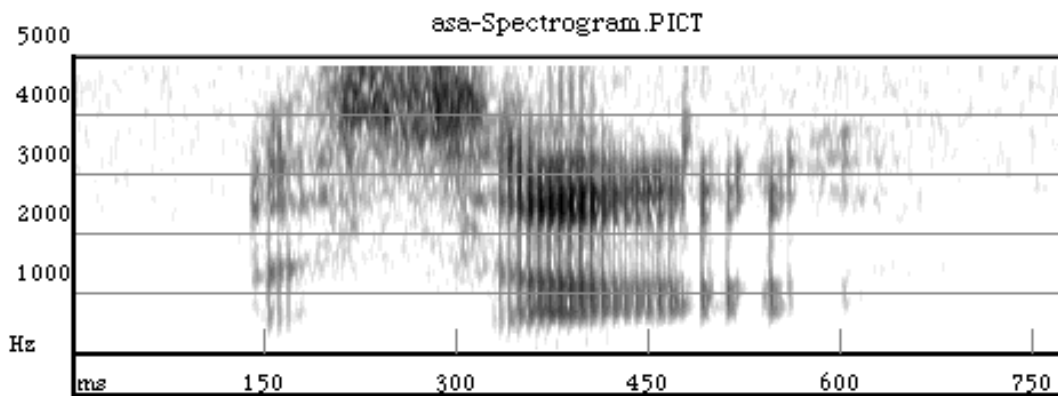


Manner of Articulation distinctions

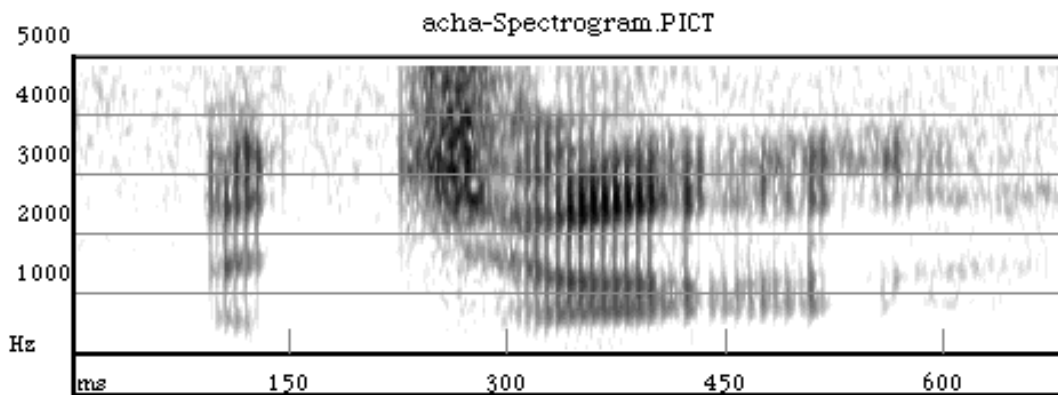
[b] = stop—pronounced with complete blockage of airflow



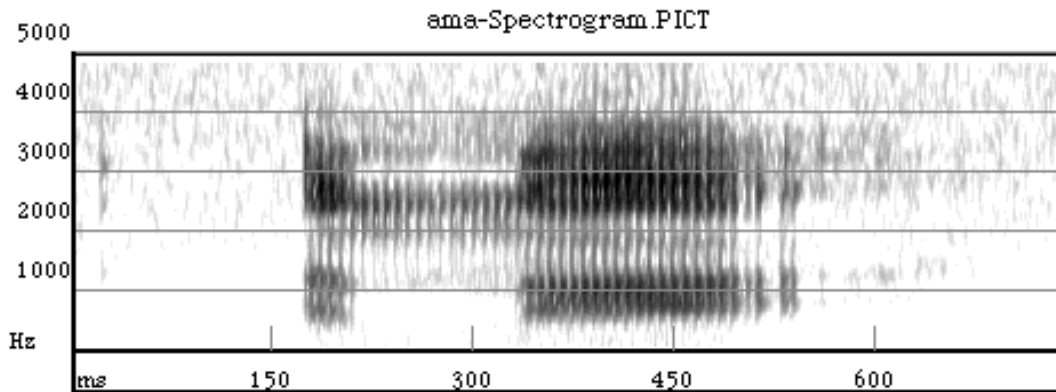
[s] = fricative—pronounced with incomplete blockage of airflow



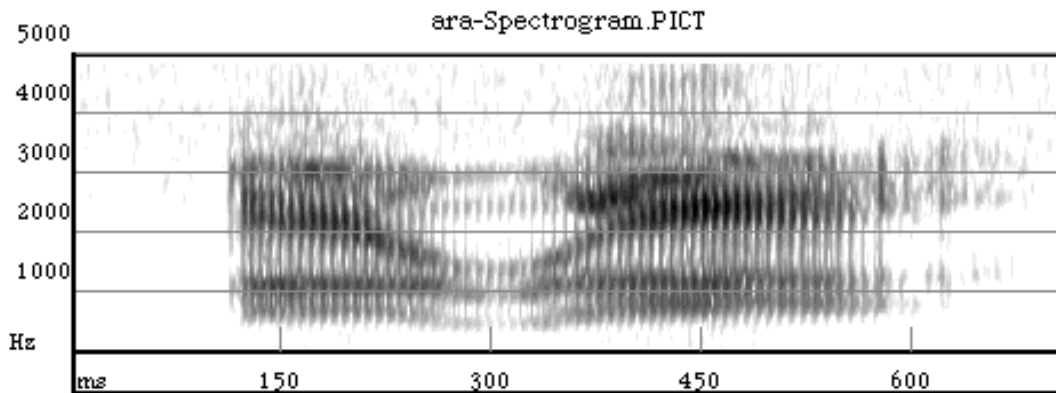
‘ch’ = [c] = affricate—a combination of a stop followed by a fricative



[m] = nasal—a stop pronounced with air flowing through the nose



[r] = liquid—pronounced with no audible constriction of the airflow



[w] = glide—pronounced with even less constriction than a liquid

