

L^AT_EX Example File

Pauline Welby

December 11, 2002

1 Including figures in L^AT_EX documents

Figure 1 was made using xfig, saved and exported as an encapsulated PostScript (.eps) file.

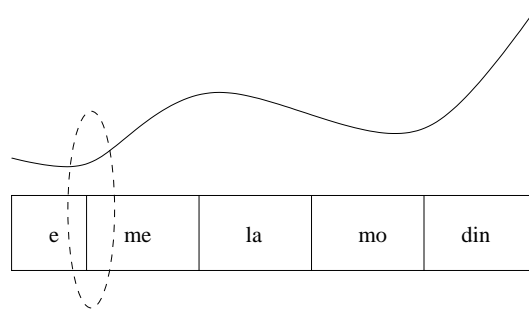


Figure 1: *Figure made with xfig.*

Figure 2 was made using Praat and saved as an eps. file.

Figure 3 is a black and white version of a scanned photograph.

The files included in Figure 4 were created using SPSS and exported as .eps files.

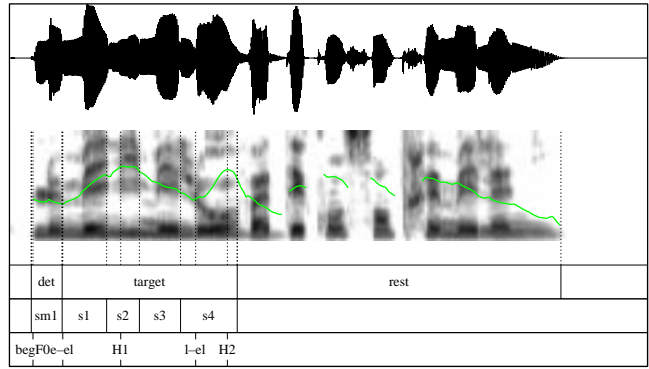
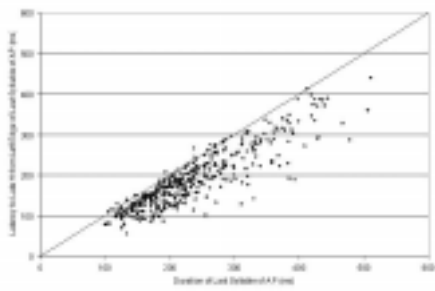


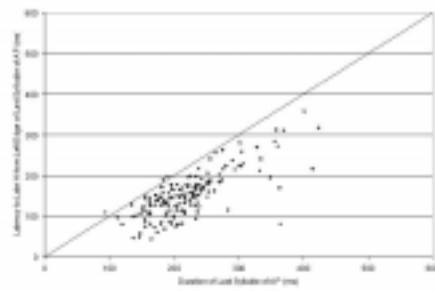
Figure 2: *Figure made with Praat.*



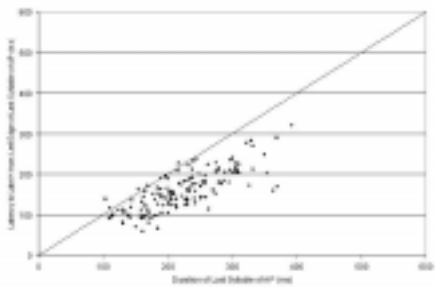
Figure 3: *Figure scanned and saved as an encapsulated PostScript file*



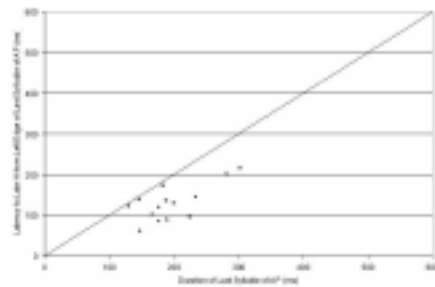
a.



b.



c.



d.

Figure 4: You can include more than one .eps file in a single figure.